

AR JAN SAMPLE 0  
F1: 300.151 F2: 0.000 SW1: 4525 OF1: 1951.0  
EX: IPULSE PW: 0.0 usec PD: 0.0 sec NA: 2 LB: 0.0  
USER: UHCHEM -- DATE: 30SEPP1997  
PTSID: 1024  
WinNuts - \$tue.009



OK

t Pm M2 BM3



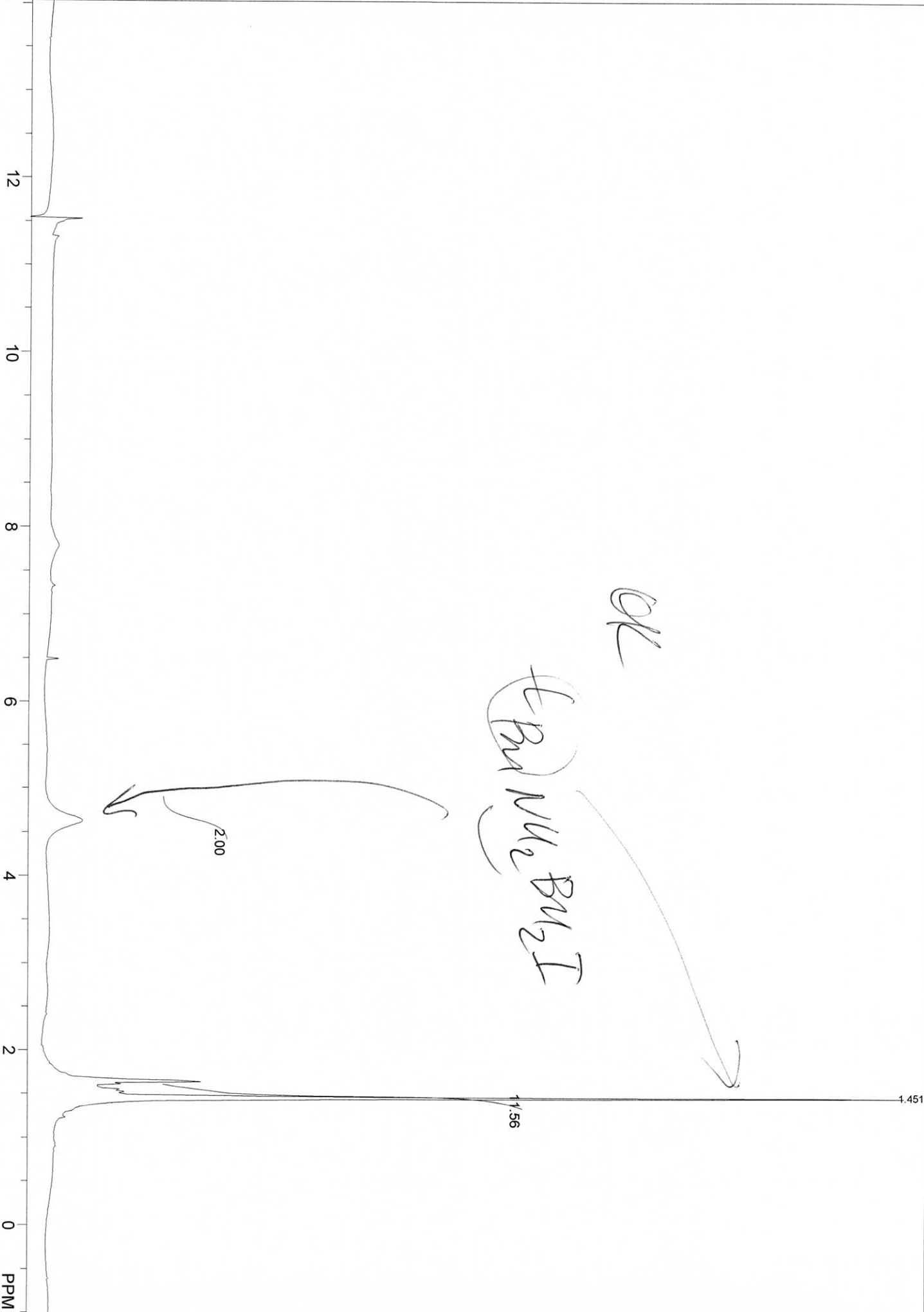
12.86

2.00

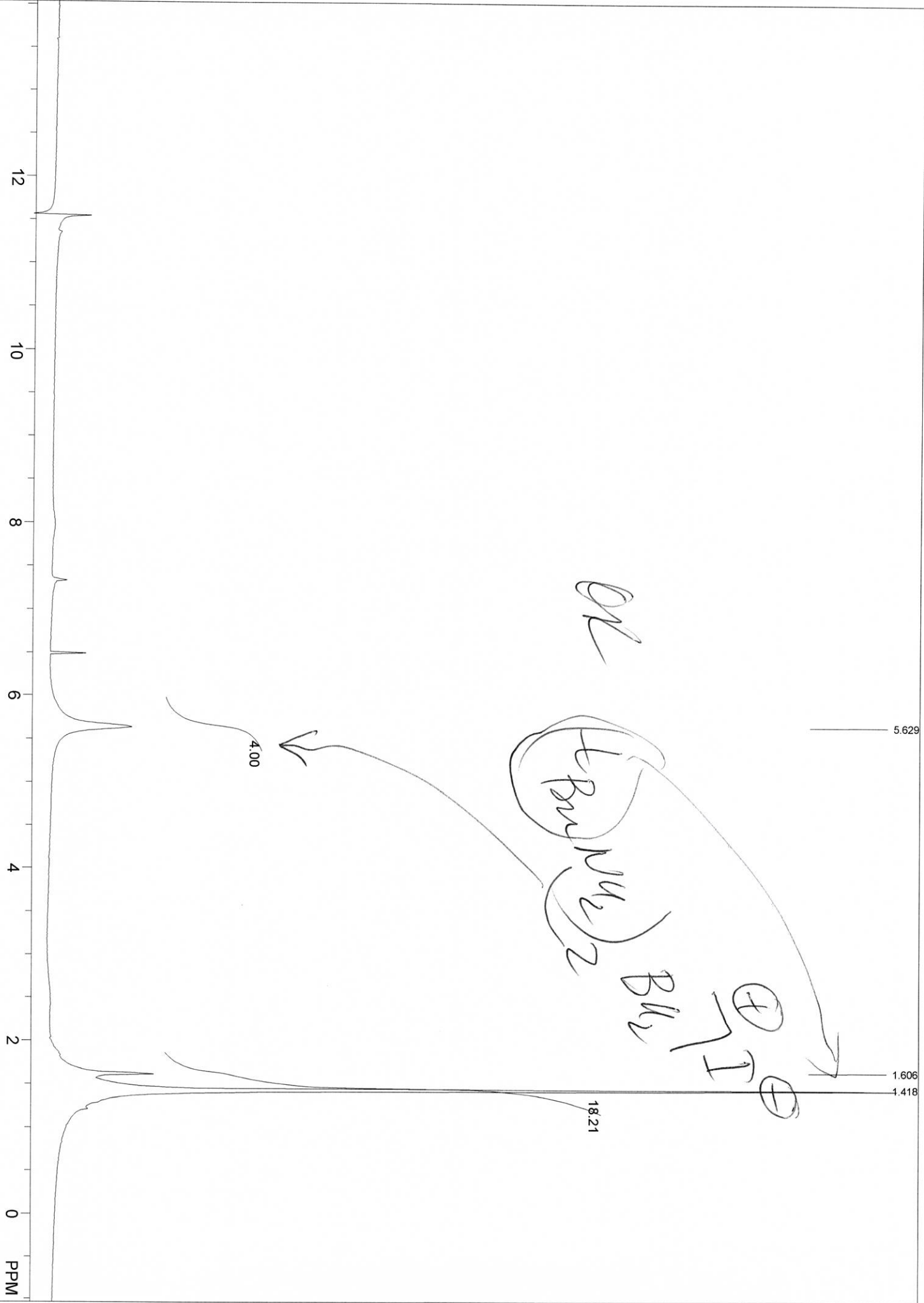
1.364

PPM

AR JAN SAMPLE 1  
F1: 300.151 F2: 0.000 SW1: 4525  
EX: IPULSE PW: 0.0 usec PD: 0.0 sec NA: 2 OF1: 1951.0  
LB: 0.0  
USER: UHCHEM -- DATE: 30SEP1997  
PTSId: 1024  
WinNuts - \$tuc.008

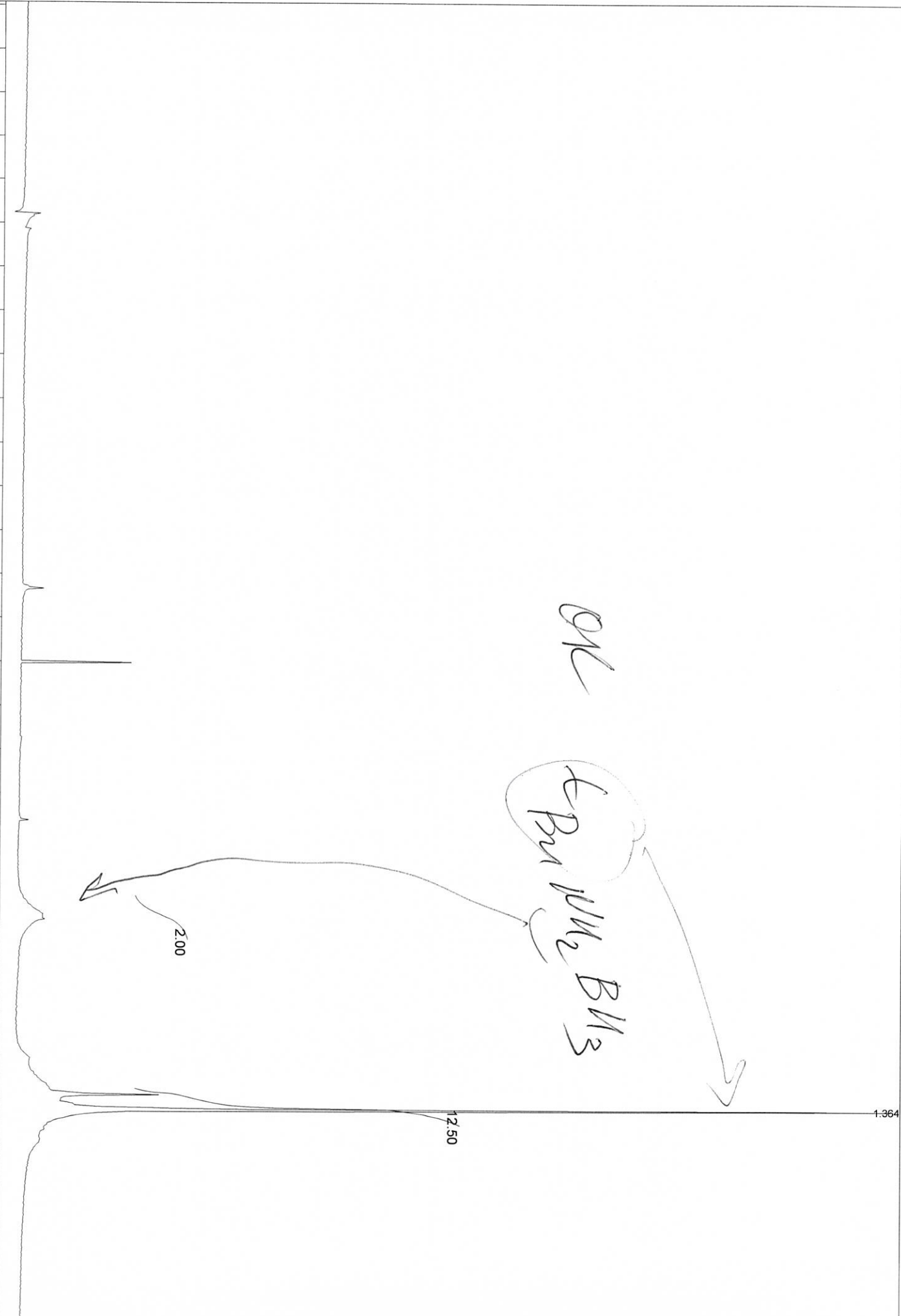


AR JAN SAMPLE 2  
F1: 300.151 F2: 0.000 SW1: 4525 PW: 0.0 usec PD: 0.0 sec OF1: 1951.0 NA: 2 LB: 0.0  
EX: 1PULSE  
USER: UHCHEM -- DATE: 30SEP1997  
PTSID: 1024  
WinNuts - \$tue.003



AR JAN SAMPLE 3  
F1: 300.151 F2: 0.000 SW1: 4525 PW: 0.0 usec PD: 0.0 sec OF1: 1951.0 NA: 2 LB: 0.0  
EX: 1PULSE

12 10 8 6 4 2 0 PPM



OK

tBu Me BMs

2.00

12.50

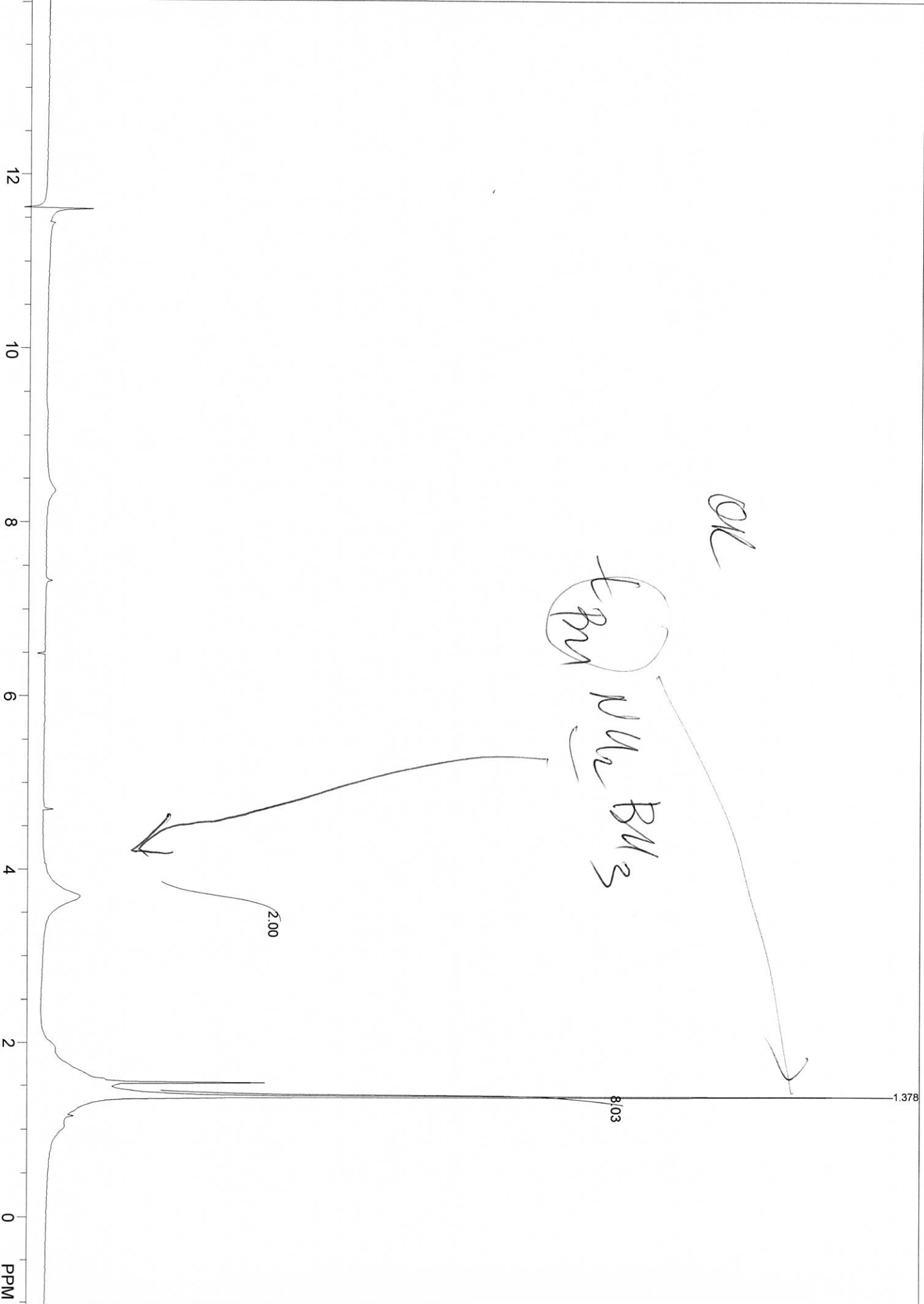
1.364

USER: UHCHEM -- DATE: 30SEP1997

PTSID: 1024

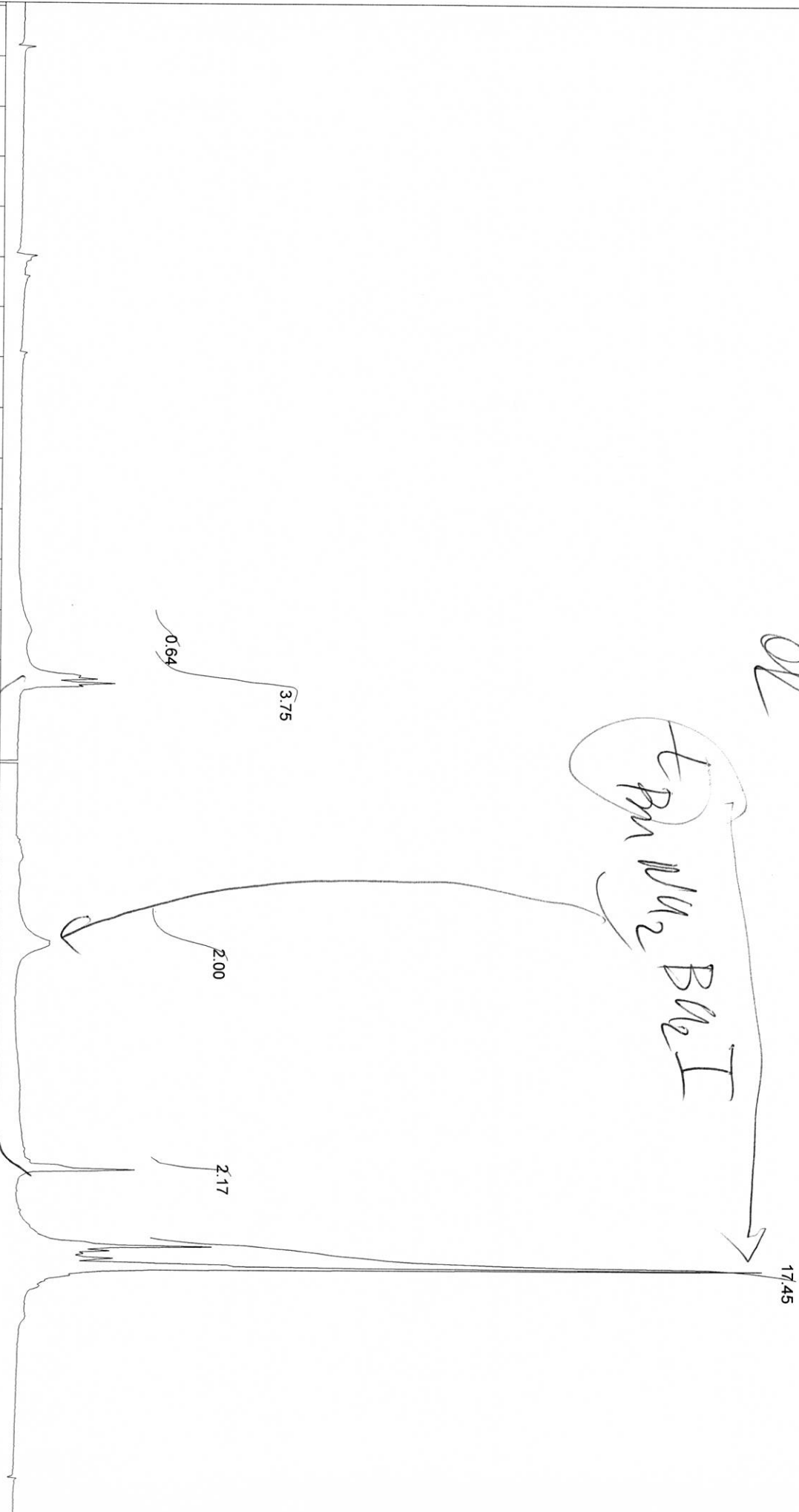
WinNuts - \$tue.002

BP SSEM SAMPLE 0  
F1: 300.151 F2: 0.000 SW1: 4525 PD: 0.0 sec NA: 2 LB: 0.0  
EX: 1PULSE OF1: 1951.0 PTSID: 1024  
USER: UHCHEM -- DATE: 30SEP1997  
WinNuts - \$tuc:007



OK

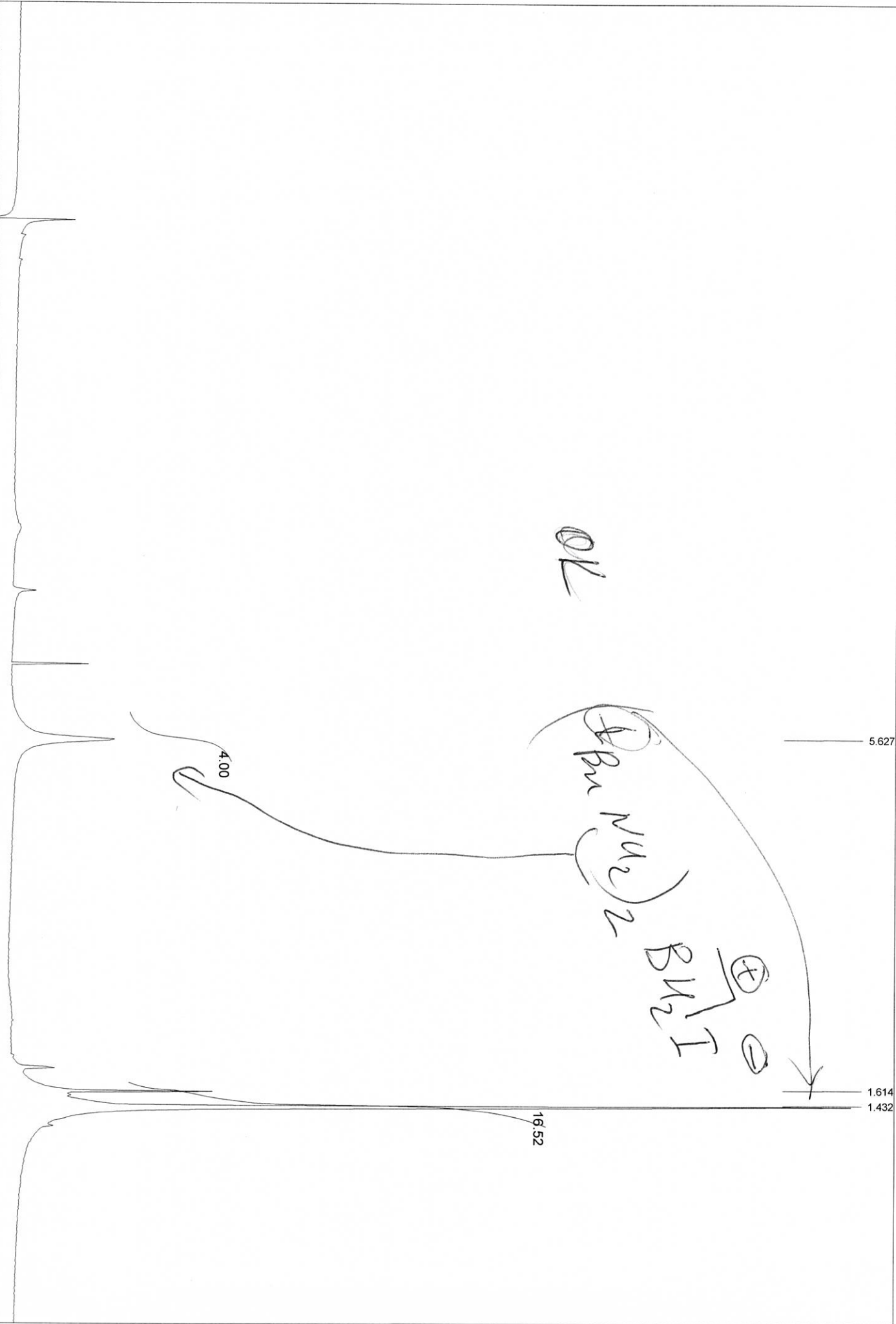
*t<sub>R</sub> M<sub>2</sub> B<sub>0</sub>I*



BP SS EM SAMPLE 1  
 F1: 300.151 F2: 0.000 SW1: 4525  
 EX: 1PULSE PW: 0.0 usec PD: 0.0 sec  
 OF1: 1951.0 NA: 2 LB: 0.0  
 USER: UHCHEM -- DATE: 30SEP1997  
 PTSID: 1024  
 WinNuts - \$tuc.012

BP SS EM SAMPLE 2  
F1: 300.151 F2: 0.000 SW1: 4525 PW: 0.0 usec PD: 0.0 sec OF1: 1951.0 NA: 2 LB: 0.0  
EX: IPULSE

12 10 8 6 4 2 0 PPM



USER: UHCHEM -- DATE: 30SEP1997  
PTSID: 1024

WinNuts - \$tue.000

1.539  
1.376

OK

*t<sub>R</sub> M<sub>2</sub> M<sub>3</sub>*

*Some amount of  
t<sub>R</sub> M<sub>3</sub> I*

*t<sub>R</sub> M<sub>3</sub> I*

1.40

2.00

9.51

5.37

12 10 8 6 4 2 0 PPM

CK MOJA SAMPLE 0  
F1: 300.151 F2: 0.000 SW1: 4525 PD: 0.0 sec NA: 1 LB: 0.0  
EX: IPULSE  
USER: UHCHEM -- DATE: 30SEP1997  
PTSID: 1024  
WinNuts - \$tuc.013

OK

*t Bu Me Bu I*



*toluene solvent*

MOCK JA SAMPLE 1

FI: 300.151	F2: 0.000	SW1: 4525	OF1: 1951.0	LB: 0.0	PTSID: 1024
EX: 1PULSE	PW: 0.0 usec	PD: 0.0 sec	NA: 2	USER: UHCHEM --	DATE: 30SEP1997

WinNuts - \$tuc.011

OK

$\left( \begin{matrix} \text{---} \\ \text{---} \\ \text{---} \end{matrix} \right) \begin{matrix} \text{---} \\ \text{---} \\ \text{---} \end{matrix} \begin{matrix} \text{---} \\ \text{---} \\ \text{---} \end{matrix}$   
 $\left( \text{---} \right) \text{---} \text{---} \text{---}$   
 $\text{---} \text{---} \text{---}$

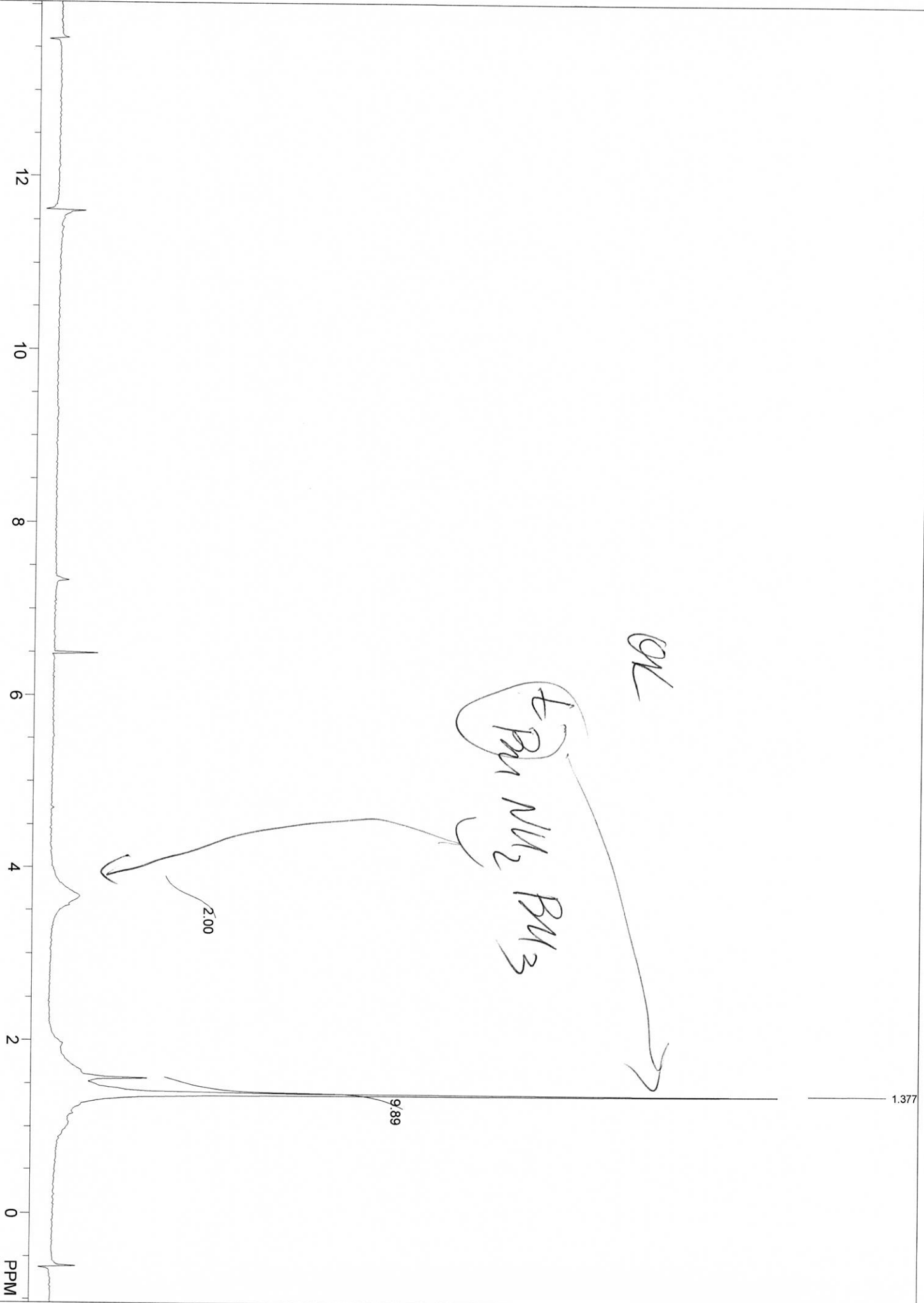
4.00

17.57

12 10 8 6 4 2 0 PPM

CK MOJA SAMPLE 2  
 F1: 300.151 F2: 0.000 SW1: 4525  
 EX: IPULSE PW: 0.0 usec PD: 0.0 sec NA: 1 LB: 0.0  
 USER: UHCHEM -- DATE: 30SEP1997  
 PTSID: 1024  
 WinNuts - \$tuc.014

CK MO JA SAMPLE 3  
F1: 300.151 F2: 0.000 SW1: 4525  
EX: 1PULSE PW: 0.0 usec PD: 0.0 sec NA: 2 LB: 0.0  
OFl: 1951.0  
USER: UHCHEM -- DATE: 30SEP1997  
PTSID: 1024  
WinNuts - \$tuc.015



1.359

OK

⊂  
By NLS BM3

2.00

9/43

12 10 8 6 4 2 0 PPM

CTJN SAMPLE 0

F1: 300.151 F2: 0.000

SW1: 4525 PW: 0.0 nsec

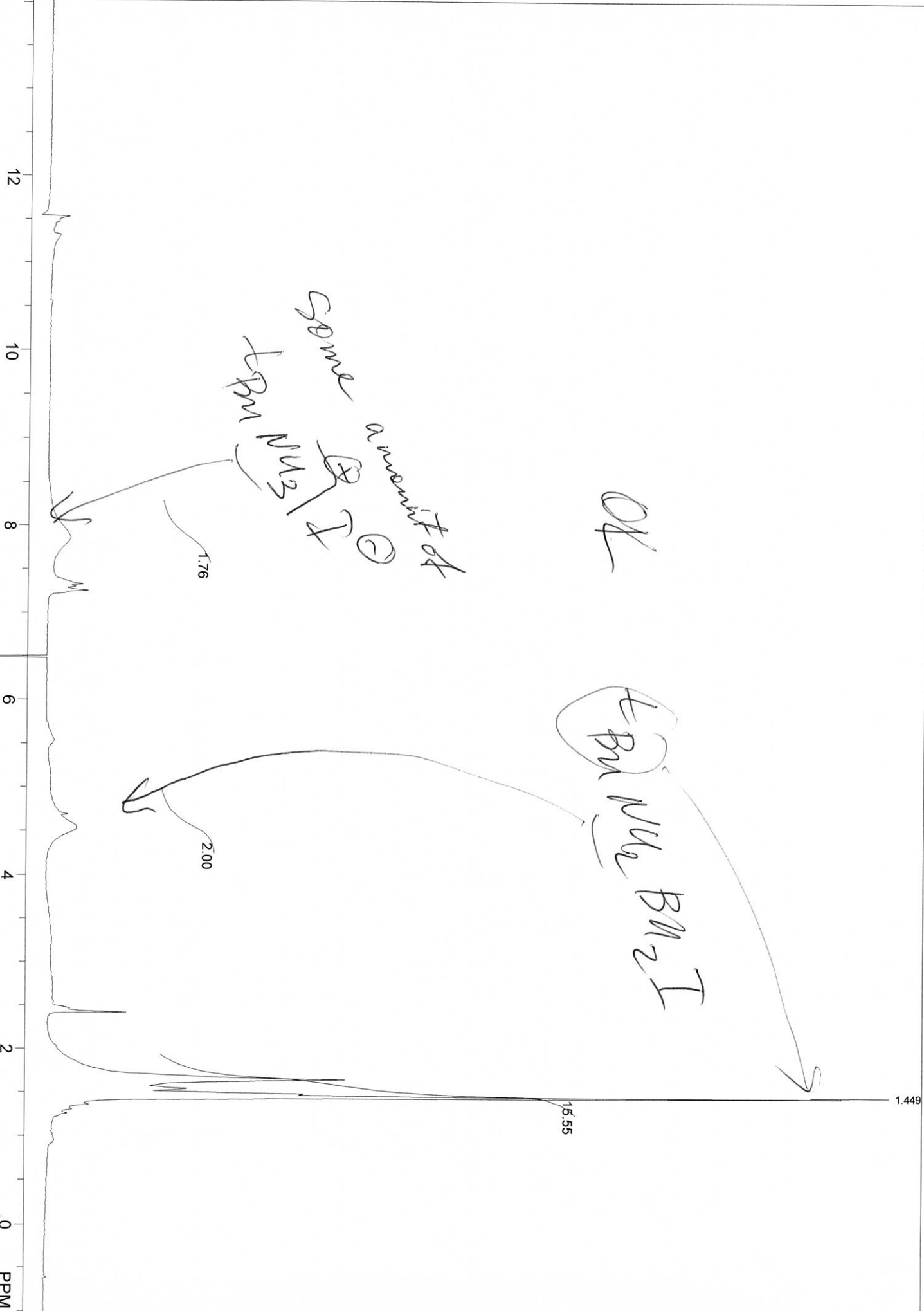
PD: 0.0 sec

OF1: 1951.0 NA: 7

IR: 0.0

USER: UHCHEM -- DATE: 30SEP1997  
PTSId: 1024

WinNmr - Sma 010



OK

some amount of  
Bn NH<sub>2</sub>

Bn NH<sub>2</sub> I

1.76

2.00

15.55

1.449

PPM

CT JN SAMPLE 1  
 F1: 300.151 F2: 0.000 SW1: 4525  
 EX: IPULSE PW: 0.0 usec PD: 0.0 sec NA: 2  
 OF1: 1951.0 LB: 0.0  
 USER: UHCHEM -- DATE: 30SEP1997  
 PTSId: 1024  
 WinNuts - \$tue.005

CT TN SAMPLE 2  
F1: 300.151  
EX: 1PULSE

F2: 0.000

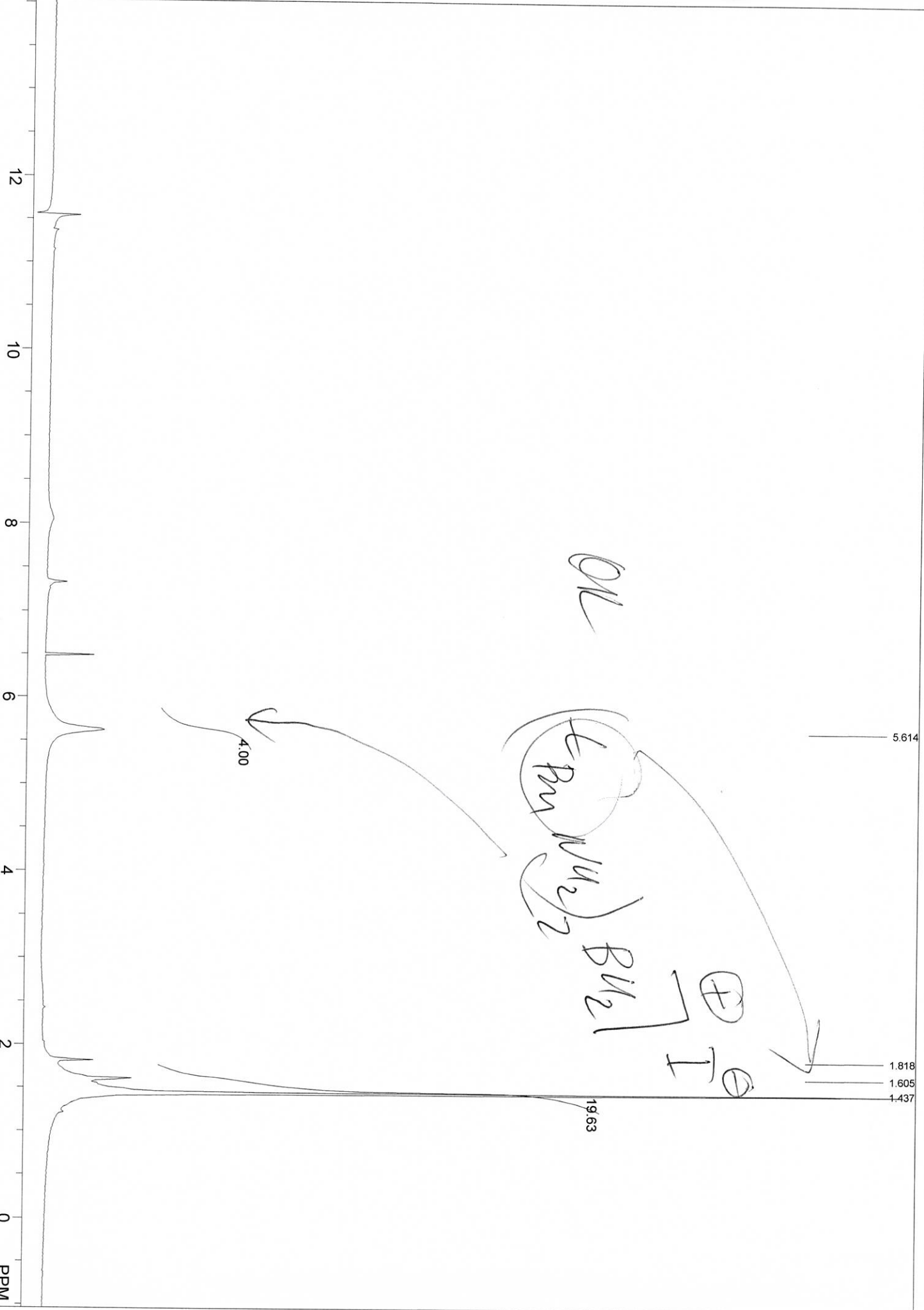
SW1: 4525  
PW: 0.0 usec

PD: 0.0 sec

OF1: 1951.0  
NA: 2

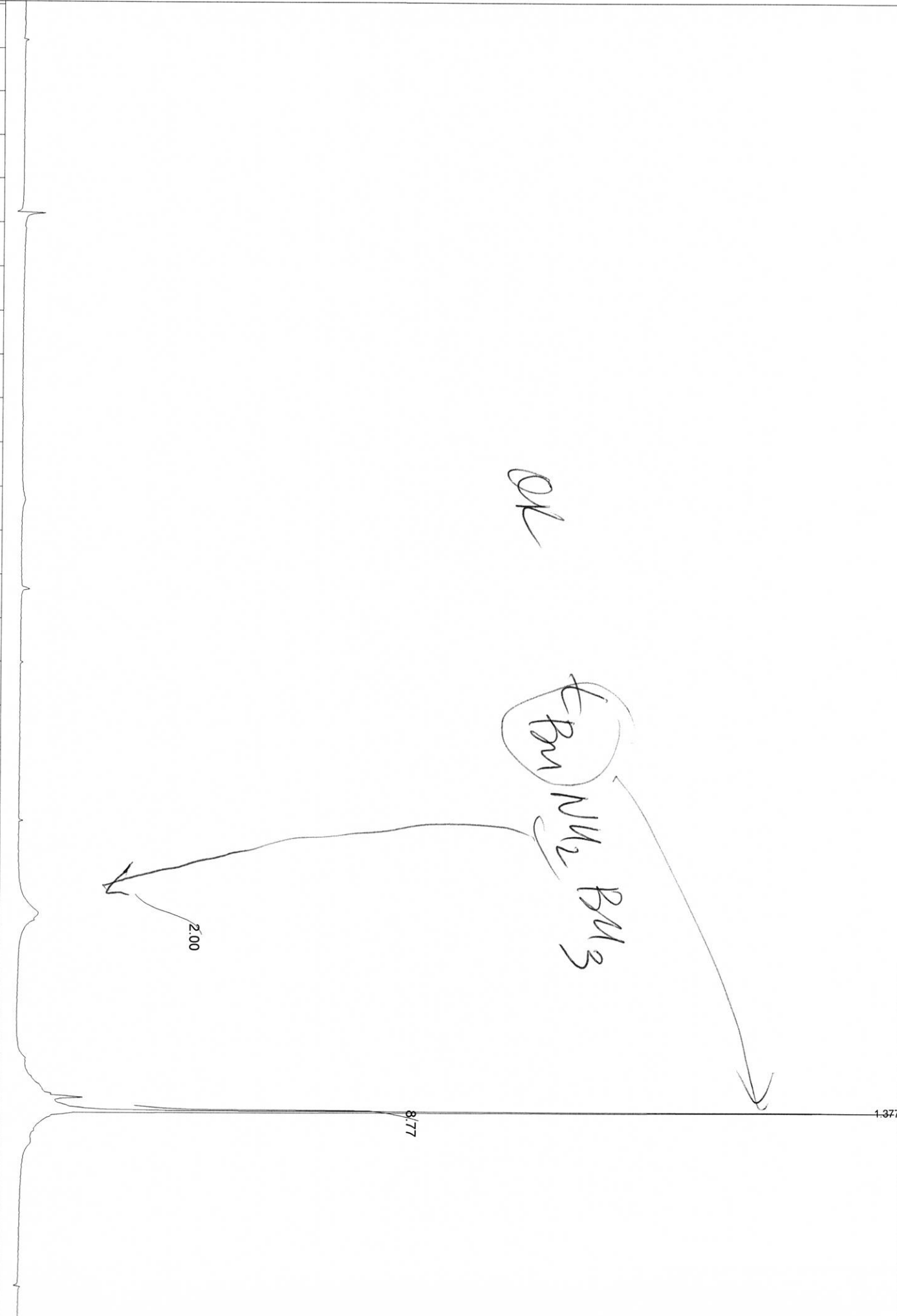
LB: 0.0

USER: UHCHEM -- DATE: 30SEP1997  
PTSId: 1024  
WinNuts - \$tuc.004



CT JN SAMPLE 3  
F1: 300.151 F2: 0.000 SW1: 4525 PW: 0.0 usec PD: 0.0 sec OF1: 1951.0 NA: 2 LB: 0.0  
EX: IPULSE

12 10 8 6 4 2 0 PPM

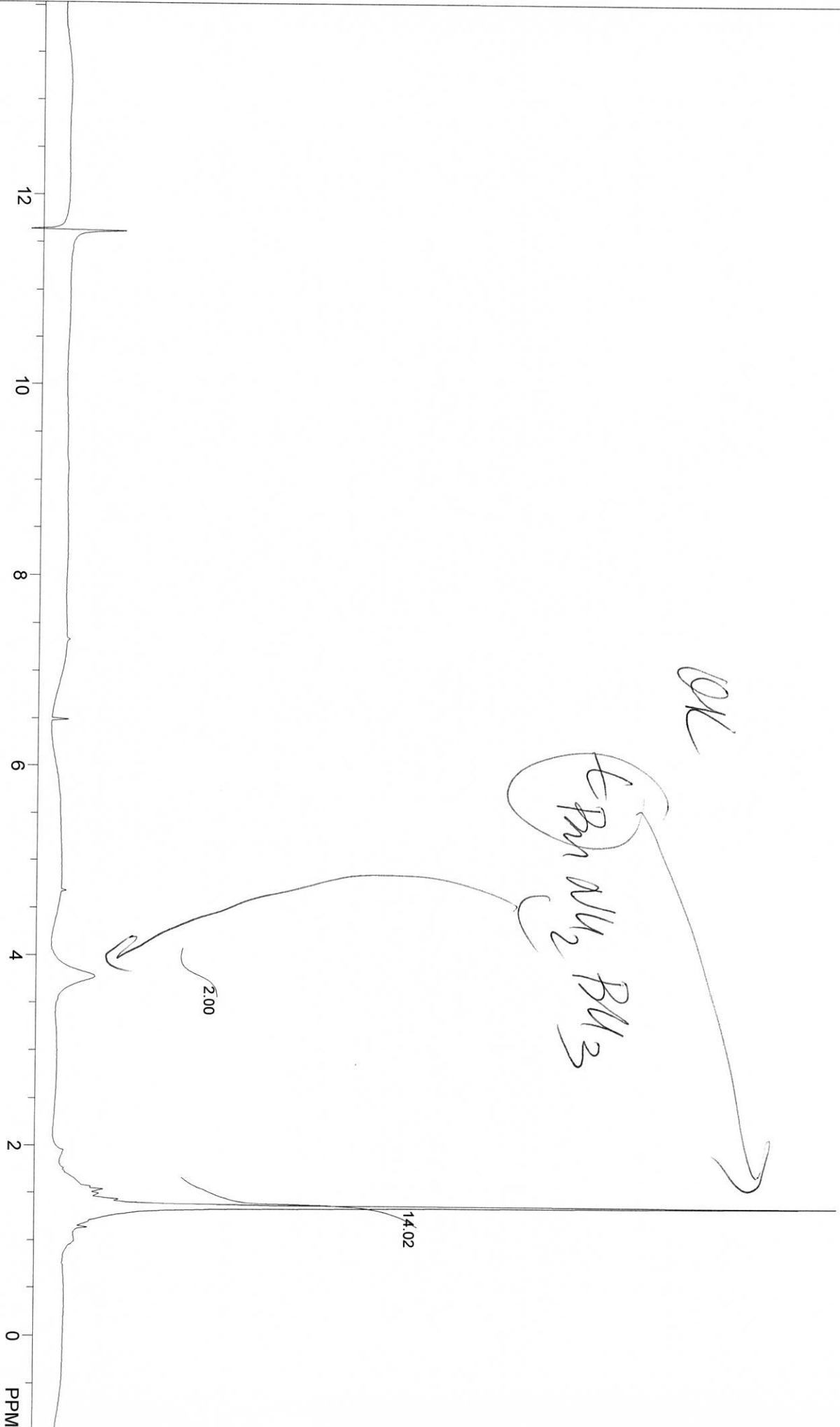


USER: UHCHEM -- DATE: 30SEP1997  
PTSID: 1024

WinNuts - \$tue.006

OK

$t_{R1} \approx 14.02$   
 $t_{R2} \approx 2.00$   
 $t_{R3} \approx 2.00$



HCJM SAMPLE 0  
F1: 300.151 F2: 0.000 SW1: 4525 PD: 0.0 sec NA: 2 LB: 0.0  
EX: IPULSE  
USER: UHCHEM -- DATE: 30SEP1997  
PTSID: 1024  
WinNuts - \$tue.018

OK

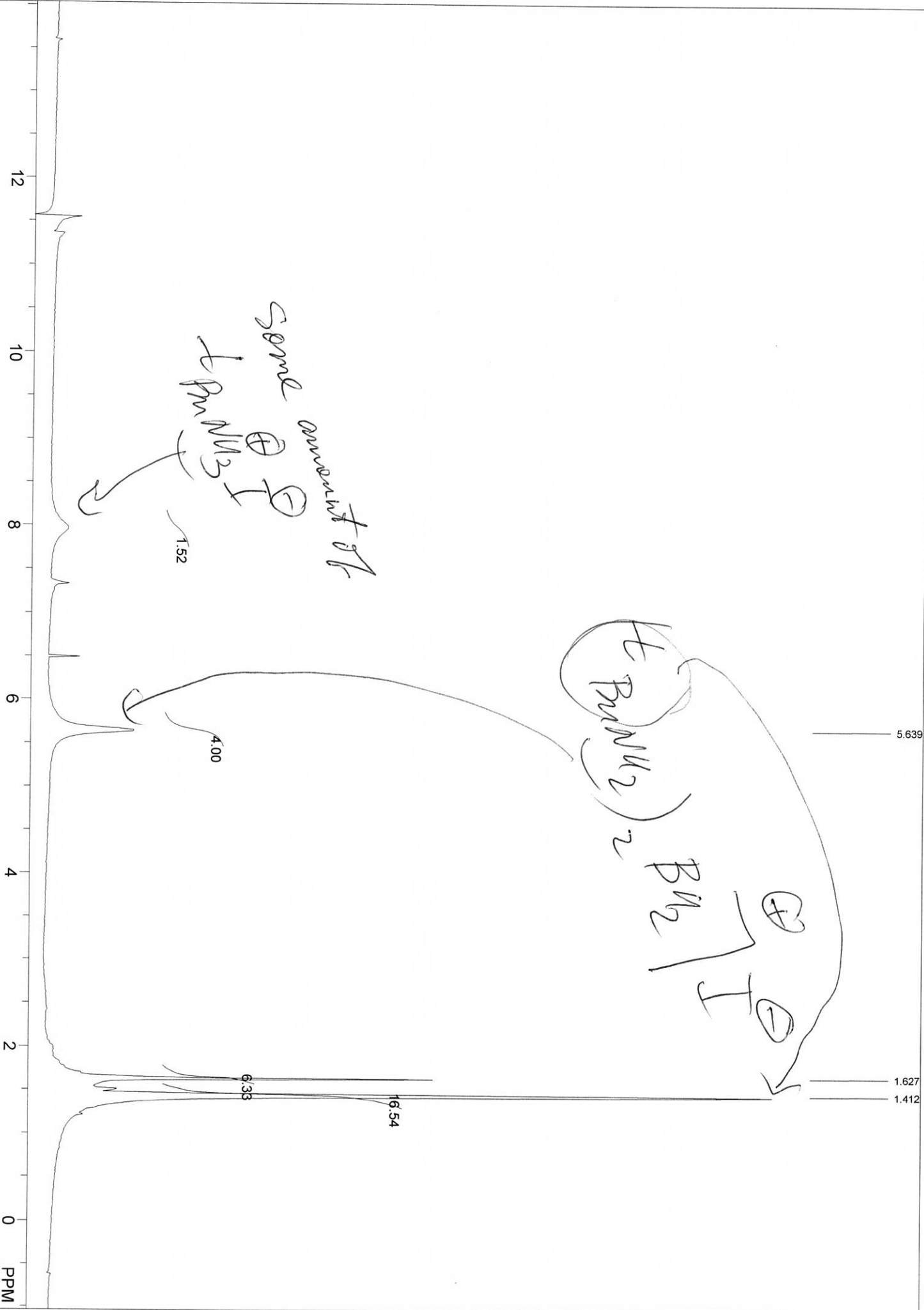
$t_{RM} \text{ } \underline{M_2} \text{ } \underline{RM_2} \text{ } I$

$t_{RM} \text{ } \underline{M_3} \text{ } I$   
due to hydrolysis



JM HC SAMPLE 1  
 F1: 300.151 F2: 0.000 SW1: 4525  
 EX: IPULSE PW: 0.0 usec PD: 0.0 sec NA: 2  
 OF1: 1951.0 LB: 0.0  
 USER: UHCHEM -- DATE: 30SEP1997  
 PTSID: 1024  
 WinNuts - \$tuc:016

HCJM SAMPLE 2  
 F1: 300.151 F2: 0.000 SW1: 4525  
 EX: 1PULSE PW: 0.0 usec PD: 0.0 sec OF1: 1951.0  
 NA: 2 LB: 0.0  
 USER: UHCHEM -- DATE: 30SEP1997  
 PTSID: 1024  
 WinNuts - \$tue.017



HCJM SAMPLE 3  
F1: 300.151 F2: 0.000 SW1: 4525 OF1: 1951.0  
EX: IPULSE PW: 0.0 usec PD: 0.0 sec NA: 2 LB: 0.0  
USER: UHCHEM -- DATE: 30SEP1997  
PTSID: 1024  
WinNuts - \$tuc.001

